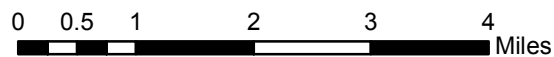
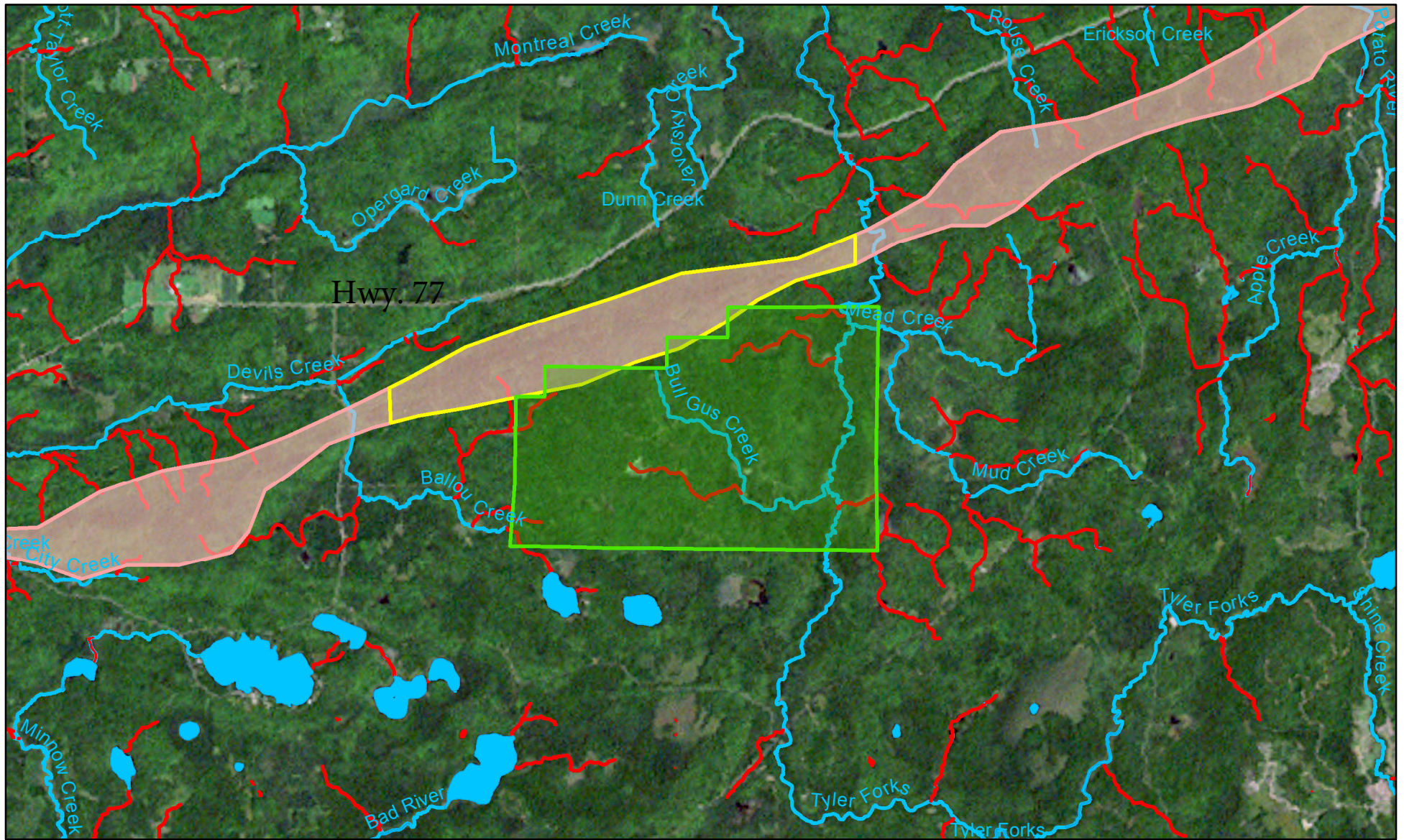


Surface waters potentially filled by iron mining given provisions of AB1/SB1 as amended February 5, 2013



GLIFWC draft 2013/02/19
Wetlands are not included in this analysis



Legend

- Streams & lakes potentially filled by mining (streams with < 2 sq. mi. drainage & lakes < 2 acres)
- Streams with > 2 sq. mi. drainage, trout streams, & lakes > 2 acres
- GTAC Iron County Forest leased lands
- Possible mine initial project area (approx.)
- Penokee Hills iron ore deposits (approx.)

Figure 1