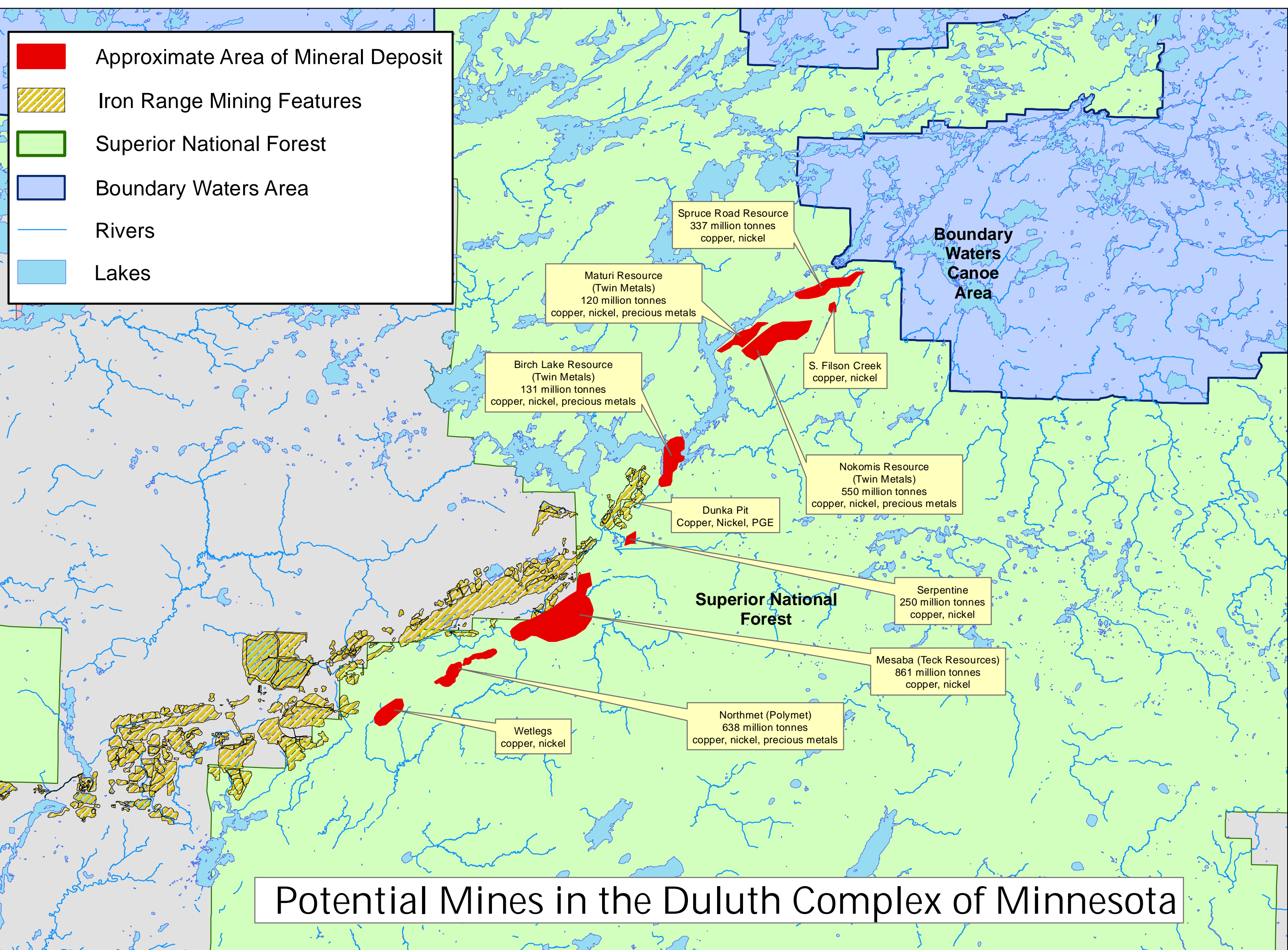
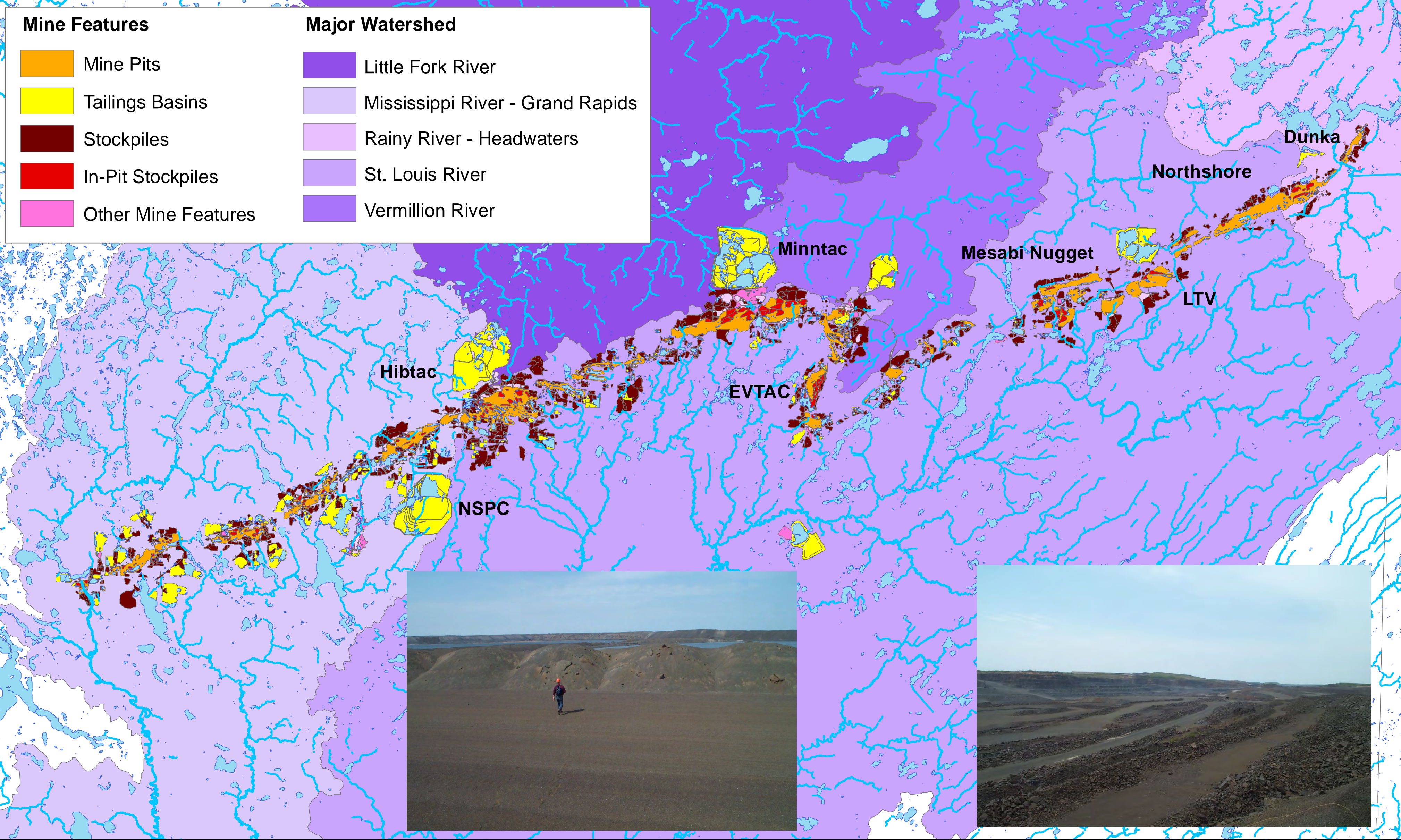


Existing Mining Facilities in the Iron Range of Minnesota

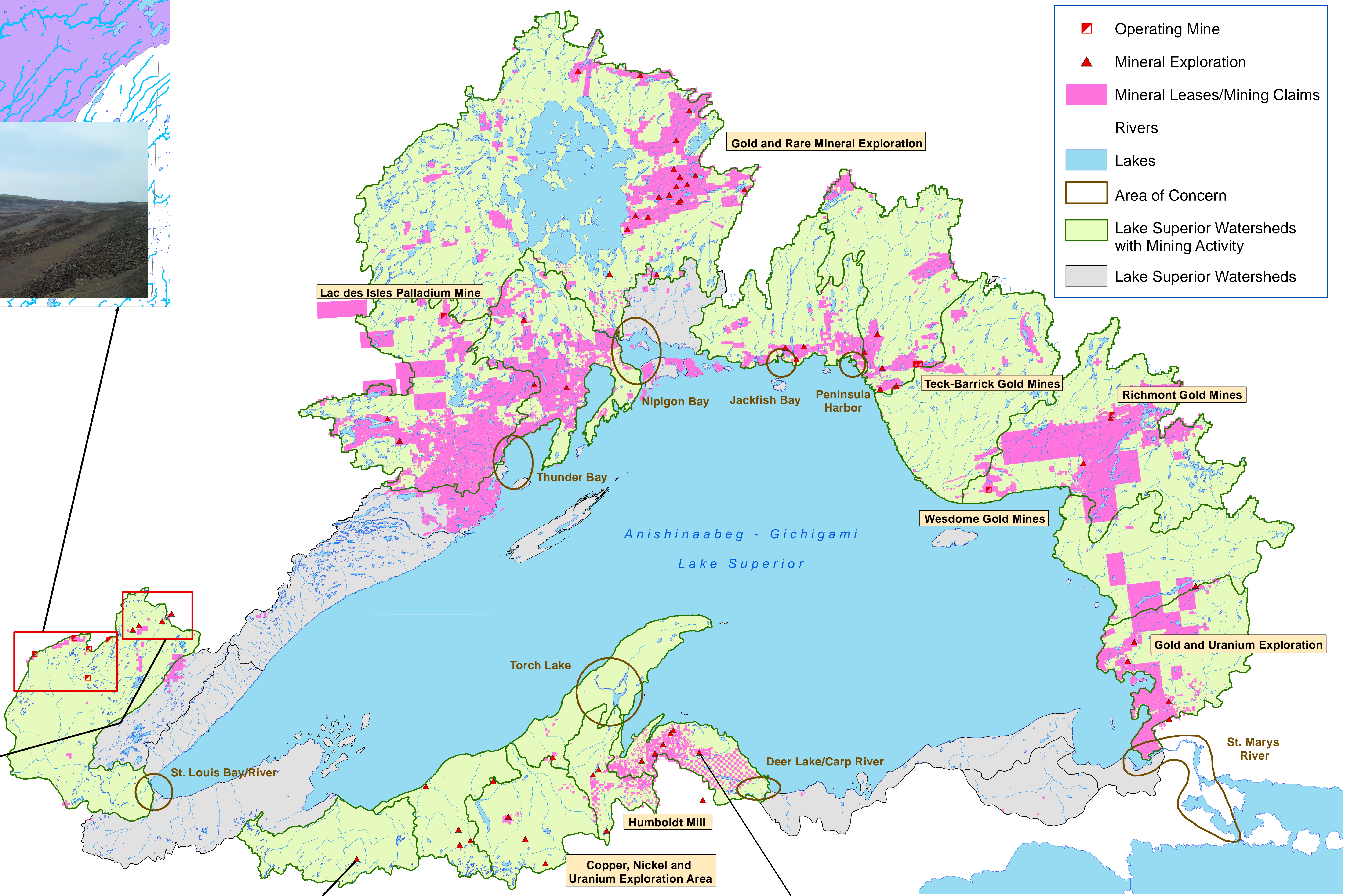


Mapping Mining Activity In the Lake Superior Basin

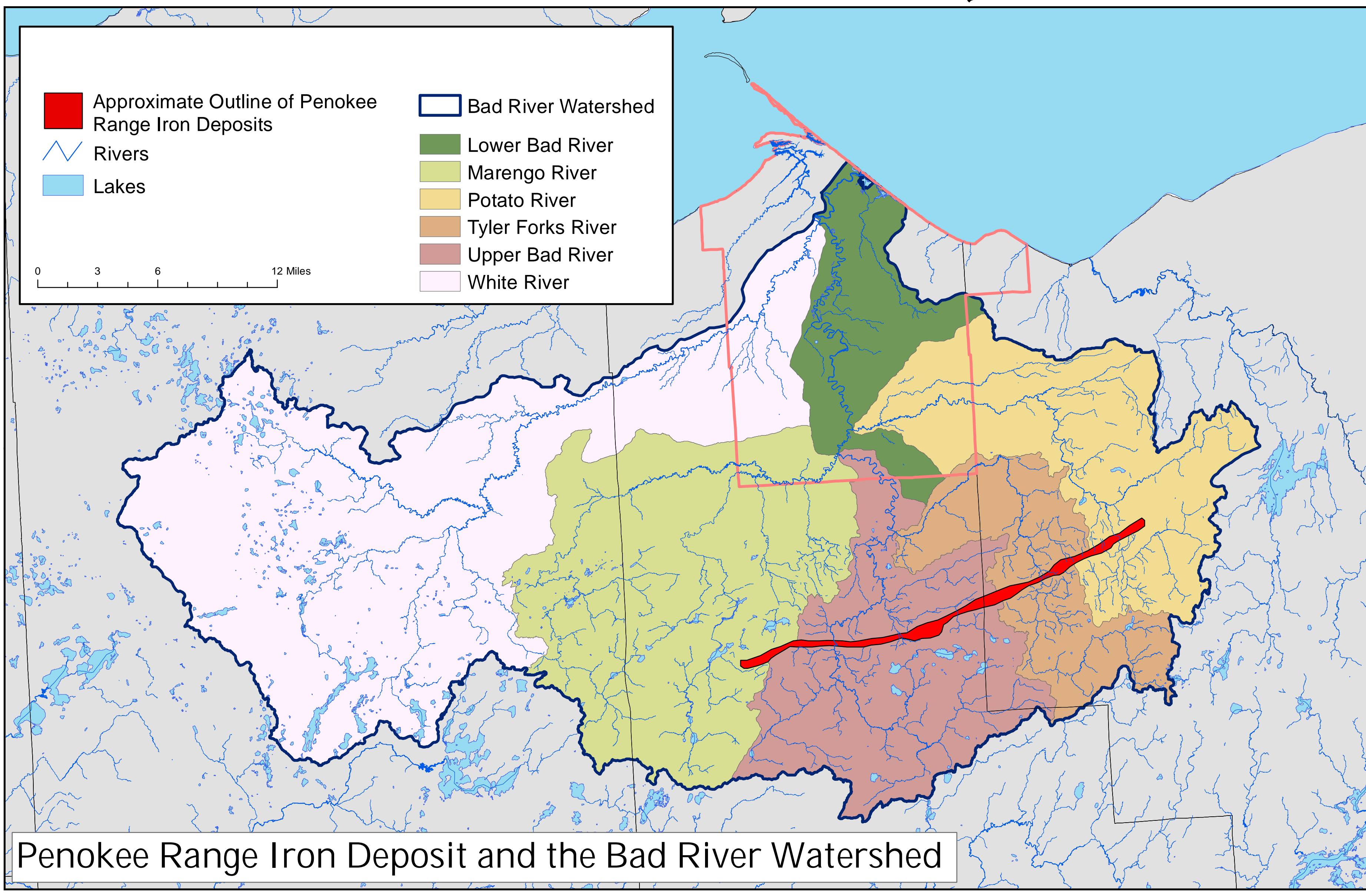
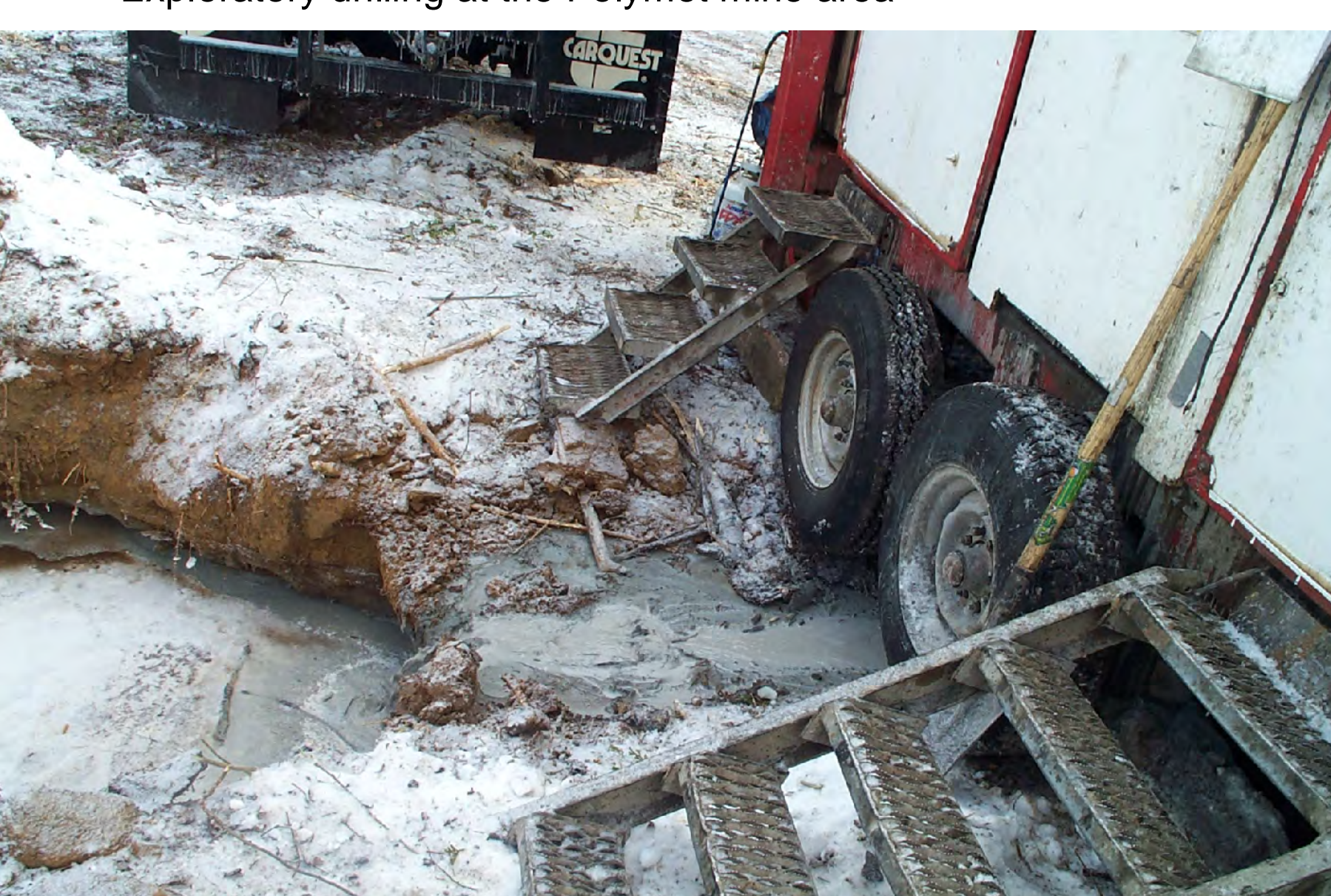
In recent years, the demand for metals around the world and the resulting high prices have been driving exploration and development of mining projects in the mineral-rich Lake Superior basin. The Great Lakes Indian Fish and Wildlife Commission has been developing and maintaining Geographic Information System (GIS) databases of mineral activity in the western Great Lakes region for the past 12 years. As part of GLIFWC's work with the Binational Program to Restore and Protect Lake Superior, GLIFWC has expanded this work to include the Canadian portion of the watershed. As a result, GLIFWC is able to provide detailed spatial representations of mining activity at multiple spatial scales. These representations can then be used to define areas potentially impacted by both individual mines and mining districts composed of multiple mines.



Esteban Chiriboga
Great Lakes Indian Fish and Wildlife Commission
550 Babcock Dr. Rm B-102
Madison, WI 53706



Exploratory drilling at the Polymet mine area



Penokee Range Iron Deposit and the Bad River Watershed



Photo courtesy of Chauncey Moran.