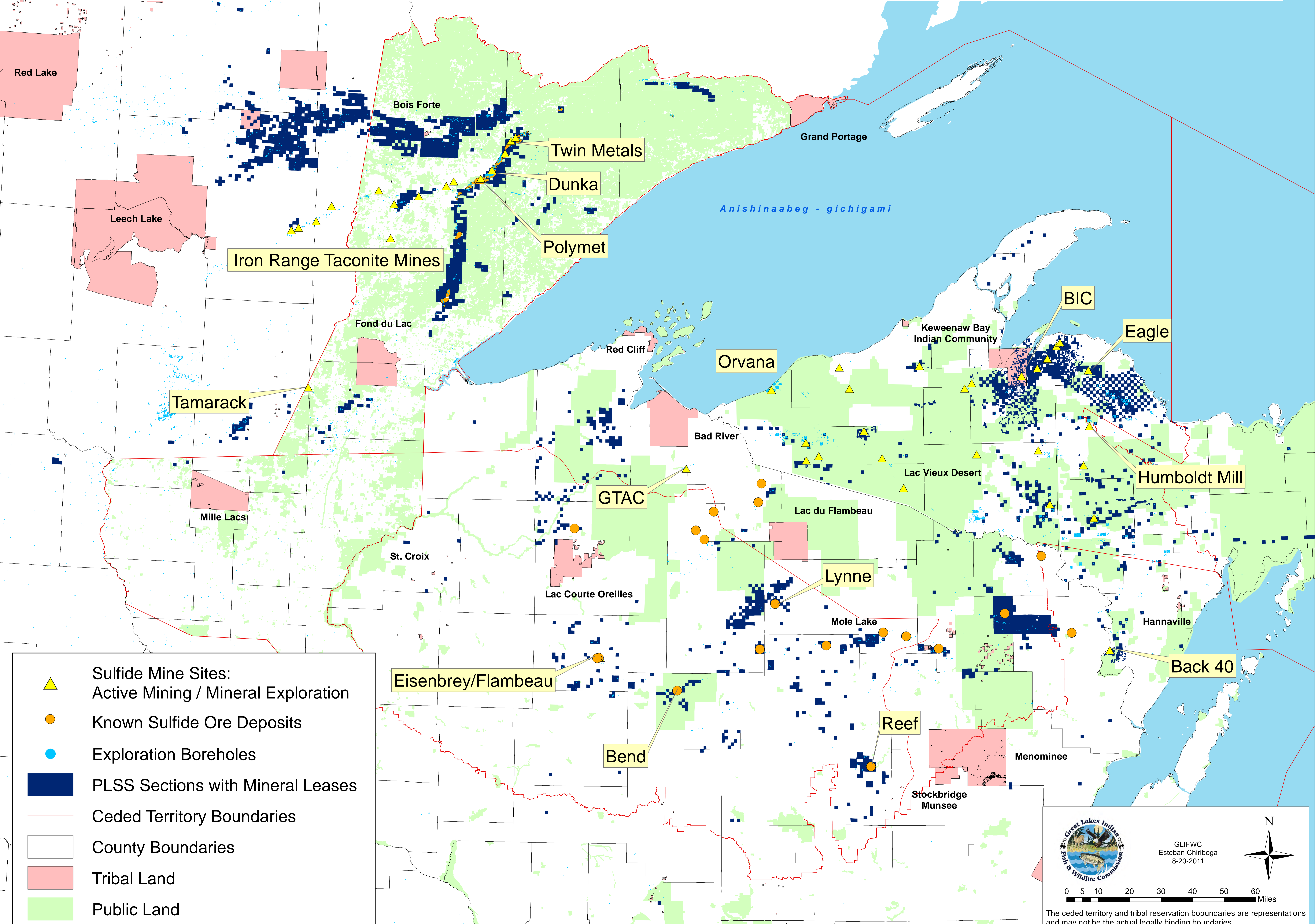



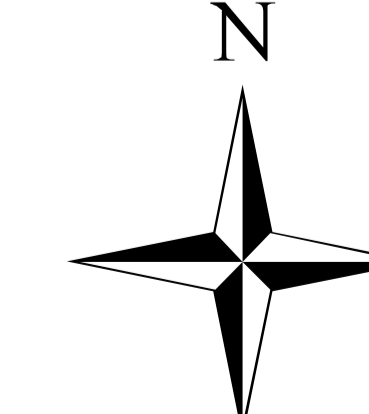
# Metallic Mineral Leases and Exploration Boreholes in the 1837, 1842, and 1854 Ceded Territories




- ▲ Sulfide Mine Sites:  
Active Mining / Mineral Exploration
- Known Sulfide Ore Deposits
- Exploration Boreholes
- PLSS Sections with Mineral Leases
- Ceded Territory Boundaries
- County Boundaries
- Tribal Land
- Public Land



GLIFWC  
Esteban Chiriboga  
8-20-2011





0 5 10 20 30 40 50 60 Miles

The ceded territory and tribal reservation boundaries are representations and may not be the actual legally binding boundaries.