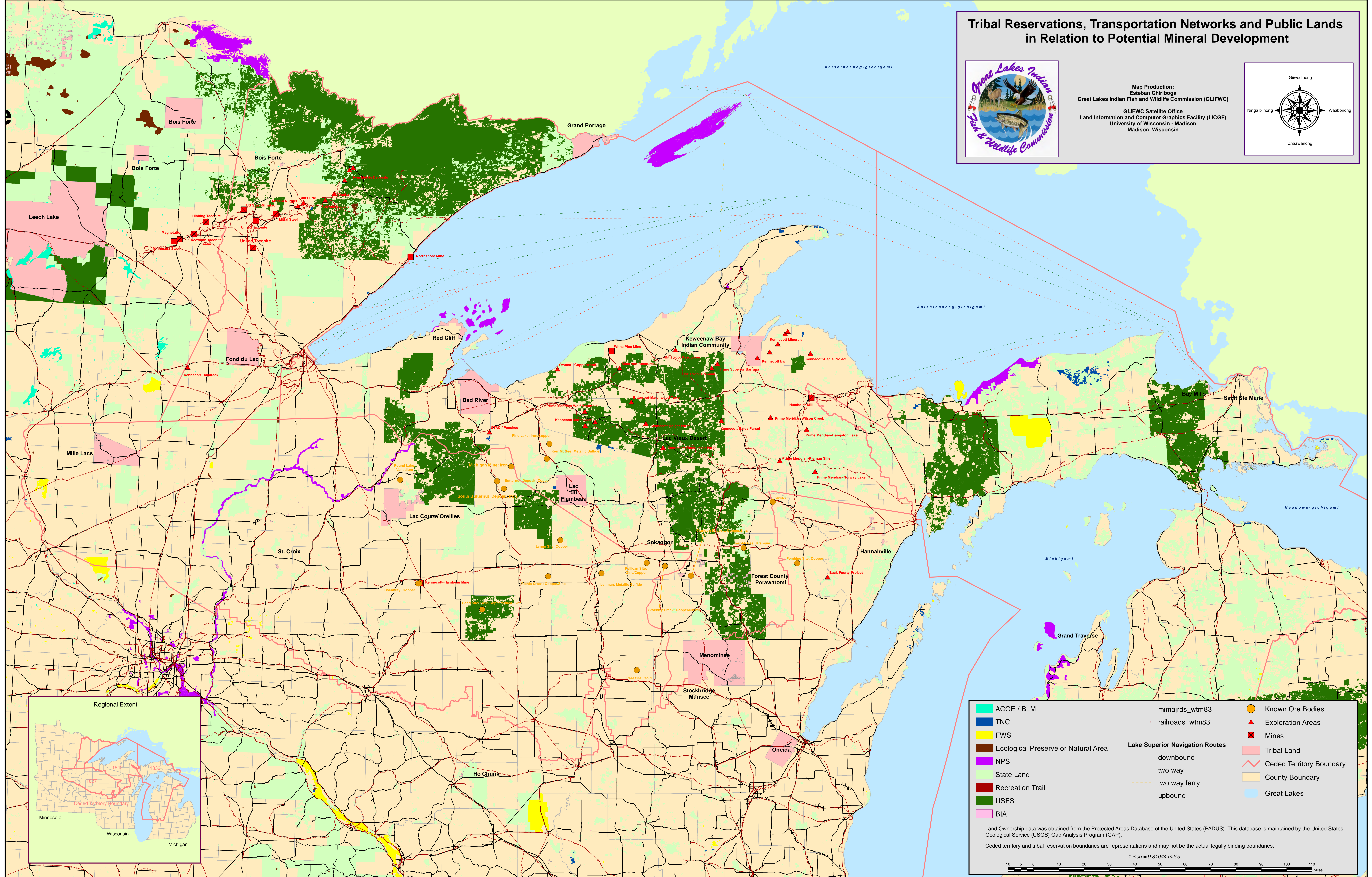
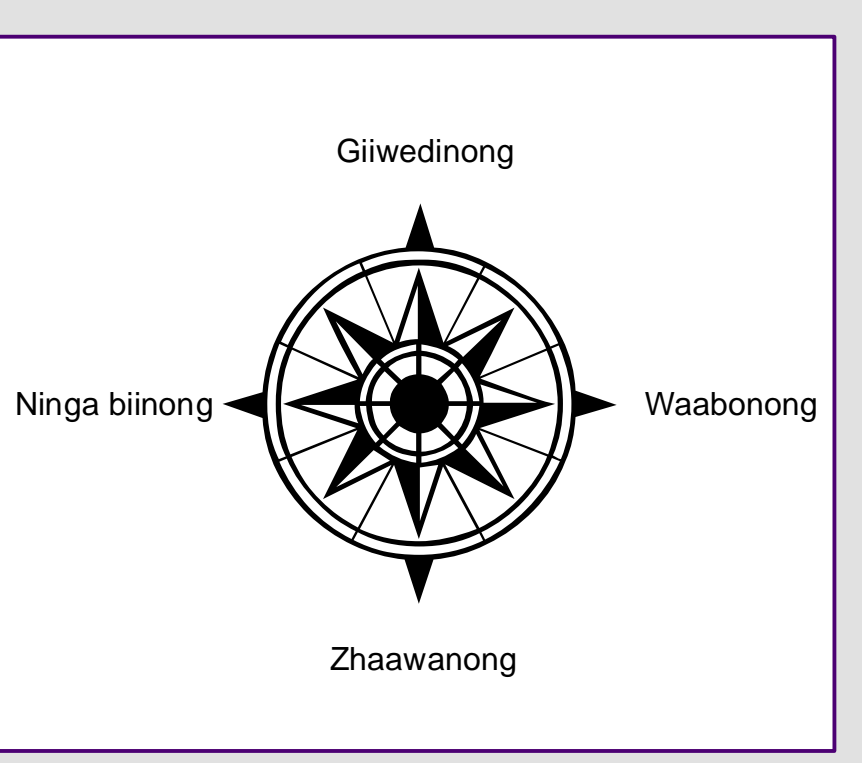


Tribal Reservations, Transportation Networks and Public Lands in Relation to Potential Mineral Development



Map Production:
 Esteban Chiriboga
 Great Lakes Indian Fish and Wildlife Commission (GLIFWC)
 GLIFWC Satellite Office
 Land Information and Computer Graphics Facility (LICGF)
 University of Wisconsin - Madison
 Madison, Wisconsin



ACOE / BLM	mimajrds_wtm83	Known Ore Bodies
TNC	railroads_wtm83	Exploration Areas
FWS	Lake Superior Navigation Routes	Mines
Ecological Preserve or Natural Area	downbound	Tribal Land
NPS	two way	Ceded Territory Boundary
State Land	two way ferry	County Boundary
Recreation Trail	upbound	Great Lakes
USFS		
BIA		

Land Ownership data was obtained from the Protected Areas Database of the United States (PADUS). This database is maintained by the United States Geological Service (USGS) Gap Analysis Program (GAP).
 Ceded territory and tribal reservation boundaries are representations and may not be the actual legally binding boundaries.

1 inch = 9.81044 miles